



System families - Michelmersh Brick Holdings PLC - wall and floor types

Thank you for downloading Michelmersh wall or floor system families. In this download you will find a Revit project containing the brick or paver product in an individual wall or floor family, downloaded from mbhplc.co.uk, bimbricks.com or bimstore.co.

The folder contains the following files relevant to the family.

- *.rfa project file containing the wall or floor type along with a sheet containing relevant metadata related to the product and family.
- *.txt file containing the shared parameter file related to the Michelmersh family types.
- *.jpeg files containing textures and sample panels of the product.
- *.ifc file with fully certified export based on the latest IAI IFC2x3 data exchange standard.
- *.pdf material take-off sheet including all relevant metadata for each product or type.
- *.pdf User Guide

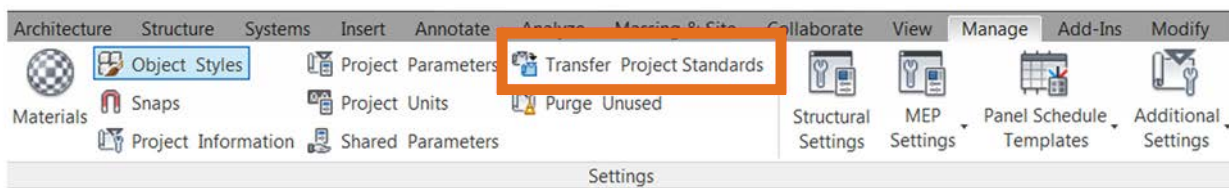
Transferring wall or floor parameters

Before doing anything with this file, it is necessary that the user be aware that there is a large amount of built in metadata which needs to be brought into any project that the wall/floor is required in.

A large number of parameters, including a number of COBie parameters, are built into the wall or floor at both family type and material level.

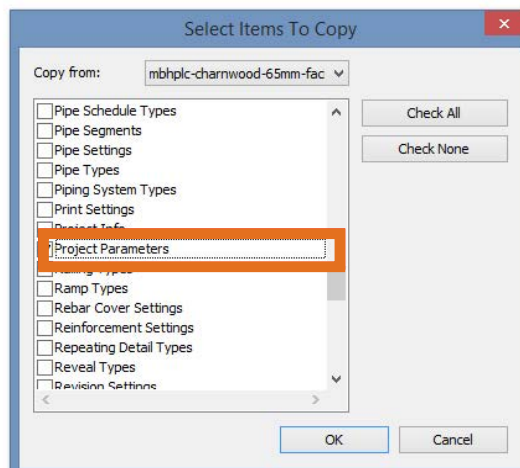
In order for these parameters to be brought across to the required project, the following method should be used:

1. Navigate to the project you wish to copy the wall or floor to.
2. Under the Manage tab on the ribbon, select 'Transfer Project Standards'.



3. Ensure you have the Michelmersh project selected in the 'Copy from' drop down list at the top and then scroll down and select 'Project Parameters' in the list.

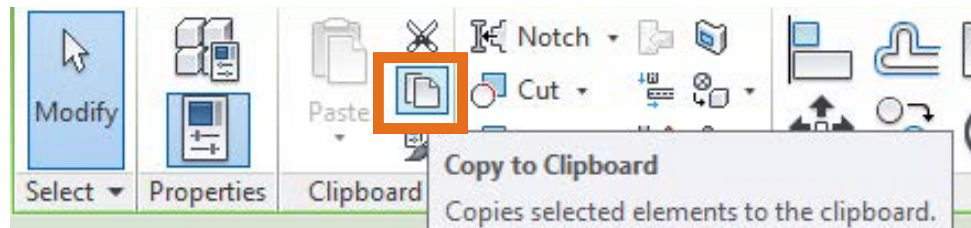
Click OK and this will bring across all the parameters that are relevant to the wall or floor product family.



Loading the component into your project

You can now load the Michelmersh wall or floor into your project using the following method:

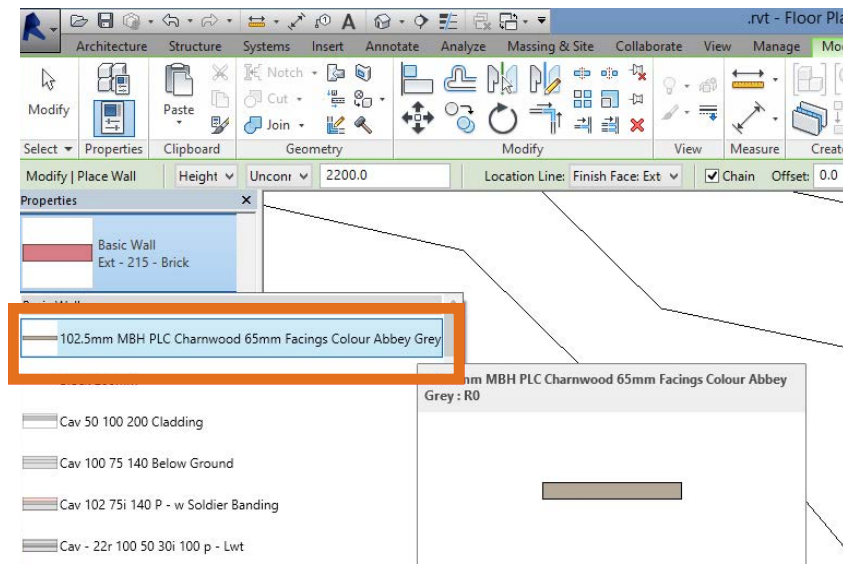
1. Open the Revit file containing your 'project' and navigate to an appropriate plan view.
2. Open the Revit file you have downloaded from mbhplc.co.uk containing the wall, floor or roof type that you want to place in your project.
3. Navigate to the 'Product-Plan' view in the Michelmersh project then select the component.
4. On the Ribbon, select the Modify tab then click the 'Copy' button.



5. Switch back to your 'project' and in the plan view you have open, on the Modify tab select the 'Paste' button and left click in the model space to paste the wall or floor type. This will bring across the component, material and metadata to your project.



6. You can now delete this instance of the wall or floor and access them from the Architecture tab under the wall or floor tools as and when required.



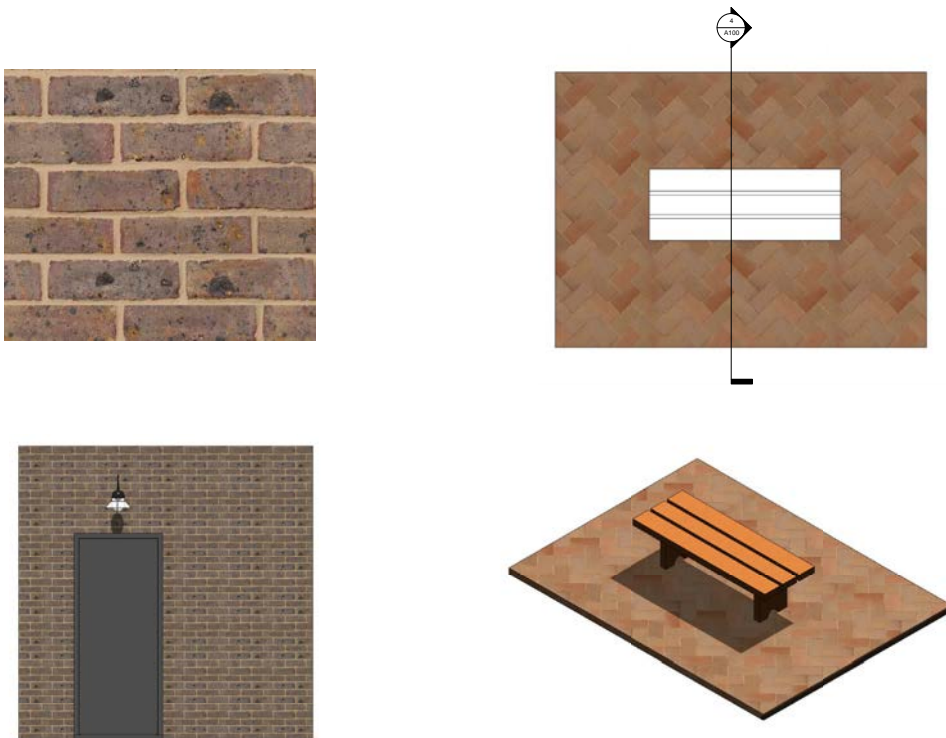
Material textures - loading the texture library

These families contain manufacturer specific render materials. Revit will try and find these materials on your computer in the following directory:

C:\LocalRVT\Bimstore\Materials\MBH_PLC

The first time you use these files you will need to copy the images contained in the brick or paver folder that you downloaded, in to the 'MBH_PLC' folder above (you may need to create the folder structure if you have not used MBH PLC components with custom materials before).

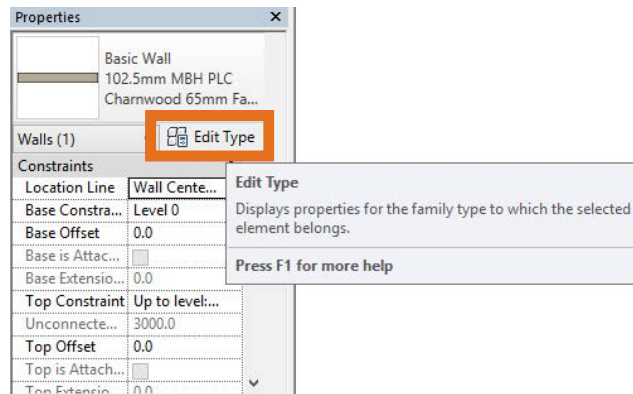
The Michelmersh textures will now load the custom render finishes from this location.



Michelmersh manufacturer specific data

The Michelmersh families contain a host of technical and manufacturer specific data to assist the user when building up their project or when scheduling.

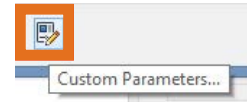
To access the data embedded into the families, simply select the desired component and click the 'Edit Type' button at the head of the 'Properties' tab.



Type Properties	
Family:	System Family: Basic Wall
Type:	102.5mm MBH PLC Charnwood 65mm Facings Colour Abbey Grey
Type Parameters	
Parameter	Value
Construction	
Structure	Both Edit...
Wrapping at Inserts	Both
Wrapping at Ends	None
Width	102.5
Function	Exterior
Graphics	
Materials and Finishes	
Structural Material	Masonry MBH PLC Charnwood 65mm Facings Colour Abbey Grey
Identity Data	
Keynote	F10/110
Model	MBH PLC Charnwood 65mm Facings Colour Abbey Grey
Manufacturer	Michelmersh Brick Holdings PLC
Type Comments	Group 1 Frogged HD Clay Facing Brick
URL	www.mbhplc.co.uk/bim
Description	Brick
Assembly Description	Ext. Wall - Brick (Single Wythe)
Assembly Code	B2010150
Type Mark	HB-0001-ABBG-FT-B-1C
Fire Rating	Class A1
Cost	
ManufacturerTelephone	0844 931 0022
ManufacturerAddress	Michelmersh Brick Holdings PLC, Freshfield Lane, Danehill, Sussex, RH17 7HH
Analytical Properties	
General	
Data	
DimensionSize	215x102.5x65 mm
ProductShape	Rectangular Prism
ProductMaterial	Fired Clay
ProductReferencedStandard	EN771-1
ProductColor	Grey
ProductFinish	Handmade Sand Faced
ClassificationValueUniclass2	Pr_20_93_52_15

To view all parameters associated with the product, click the edit button under the construction heading, open the material browser and click on the custom parameters icon at the bottom of the window to open the 'Material Parameters'.

Edit Assembly		
Family:	Basic Wall	
Type:	102.5mm MBH PLC Charnwood 65mm Facings Colour Abbey Grey	
Total thickness:	102.5	
Resistance (R):	0.2092 (m²·K)/W	
Thermal Mass:	13.20 kJ/K	
Layers		
	Function	Material
1	Core Boundary	Layers Above Wrap
2	Structure [1]	Masonry MBH PLC Charnwood 65mm Facings Colour Abbey Grey
3	Core Boundary	Layers Below Wrap



Material Parameters	
Parameter	Value
Data	
Configuration	Group 1 Frogged HD Clay Facing Brick
DensityTolerance	D1
DangerousSubstances	N/A
WaterAbsorption	17.0%
Plant	CHARNWOOD
Durability	F2
InitialSuctionRate	2.7
CompressiveStrength	25.0 (N/mm²)
GrossDryDensity	1600 (kg/m³)
DimensionalTolerance	T2
DimensionalRange	R1
NettDryDensity	1650 (kg/m³)
CompressiveStrengthCategory	II
IndividualUnitDimension	215x102.5x65 mm
ReactionToFire	Class A1
SolubleSaltsCategory	S2
SolubleSaltsMg	<0.01
SolubleSaltsNaK	<0.01
ThermalConductivityP90	0.49
ThermalConductivityP50	0.43
WaterVapourPermeabilityCoef	S/10
Other	
WarrantyDurationLabor	
DocumentationCertificates	
Features	
Constituents	Fired Clay
CreatedBy	Michelmersh Brick Holdings PLC
ReferencedStandard	EN771-1
SpareParts	
ExpectedLife	100
AssetIdentifier	
DocumentationTechnical	www.mbhplc.co.uk/bim

All this information including NBS and COBie parameters can be scheduled, including URL links direct to Michelmersh's website and to documentation links of the particular product.

You will see all relevant product parameters featured on the 'Material Take-Off Sheet' which is provided inside the project and as a pdf export inside the downloaded product folder.

Other notes

You can add these wall or floor components to your company template file, they will then be available without loading when starting a new project.

Revisions

Version 4.0 - Material Textures and Parameters Updated.
Files created in both Revit 2018 and Revit 2021 versions.
Floren bricks added.

Created in Revit, additional file types available - ArchiCAD, IFC, Bentley, 3DS Max, Vectorworks



MICHELMERSH

Britain's Brick Specialists

Freshfield Lane
Danehill
Haywards Heath
Sussex
RH17 7HH

Tel: 0844 931 0022
www.mbhplc.co.uk

